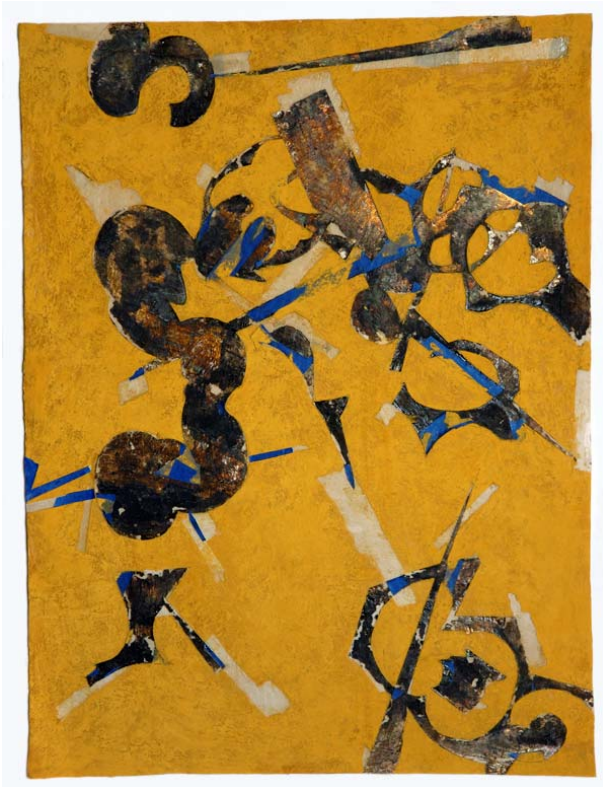


roberta fallon and libby rososof's
artblog



Dove Bradshaw *Quick Construction with Yellow and Blue* (2008) Meproof yellow, silver, liver of sulfur, tape, varnish and beeswax on paper, 25.8" x19.2", courtesy Larry Becker Contemporary Art

[Larry Becker Contemporary Art](http://larrybeckercontemporaryart.com/) is extending the exhibition of **Dove Bradshaw's** drawings, collages on paper, "drawings" on silver and three constructions which use crystals to capture radio waves. Bradshaw has long been associated with **Merce Cunningham** (for whom she designs sets and costumes) and **John Cage**, and has been notably influenced by Cage's use of chance. I'm most intrigued by the works on paper, a series ironically called *Quick Constructions*. In fact they employ a laborious technique, but their beginnings with pieces assembled at random recalls not only Cage but **Duchamp**, in works such as *Three Standard Stoppages* (1913-14) which was generated by dropping three one-meter lengths of thread from a height of one meter.

<http://fallonandrososof.blogspot.com/>